



Transport  
Roads & Maritime  
Services

# SEATS REPORT

RMS Southern, NSW

November 2018

## 1 Summary

Roads and Maritime Services are currently working on 12 projects. There are:

- 5 proposals in development, including two in conjunction with local councils
- 7 projects currently under construction

### 1.1 Proposals in development

- Princes Highway Nowra Bridge
- M1 Princes Motorway Improvements
- M1 Princes Motorway Interchange at Mount Ousley
- Kings Highway Nelligen Bridge
- Charleyong Bridge replacement (in conjunction with Queanbeyan-Palerang Regional Council)

### 1.2 Projects in construction

- Berry to Bomaderry upgrade
- Princes Highway Albion Park Rail bypass
- Batemans Bay bridge
- Princes Highway Dignams Creek
- Ellerton Drive Extension, Queanbeyan (in conjunction with Queanbeyan Palerang Regional Council).
- Lansdowne Bridge
- Monaro Highway and Kosciuszko Road overtaking lanes and safety improvements

### 1.3 Recently completed projects

- Foxground and Berry Bypass
- Princes Highway Burrill Lake Bridge

## 2 Proposals in Development

### 2.1 Princes Highway Nowra Bridge

Roads and Maritime Services is planning for a new Princes Highway bridge over the Shoalhaven River at Nowra. The project would upgrade intersections at Bolong, Illaroo and Bridge roads and at Pleasant Way. The project would improve traffic flow on the Princes Highway and deliver faster and more reliable journeys within the Nowra-Bomaderry area.

The NSW and Australian Governments have each committed \$155 million to the project.

Roads and Maritime displayed the environmental assessment and concept on the Nowra Bridge Project in August and September 2018. The community was invited to have their say on the project until Friday 28 September.

A submissions report is being prepared that will consider and address all feedback raised by the community.

This report will be available to the community later this year and will be used to assist the team in developing the detailed design.

Contractors were invited in October 2018 to register their interest to design and build the project.



<http://www.rms.nsw.gov.au/projects/south-coast/nowra-bridges-shoalhaven-river/index.html>

### 2.2 M1 Princes Motorway Improvements between Picton Road and Bulli Tops

Roads and Maritime Services is planning upgrades to the M1 Princes Motorway between Picton Road and Bulli Tops. The upgrades will improve road safety, travel times and efficiency.

A review of environmental factors for Stage 1 of the project between Picton Road and Bellambi Creek was exhibited in December 2016. In June 2017, Roads and Maritime published a Submissions Report in response to the display of the environmental assessment for the first stage of the project.

Detailed design is underway for Stage 1 and is expected to be completed in late 2018.

<http://www.rms.nsw.gov.au/projects/illawarra/m1-princes-motorway/picton-road-bulli-tops/index.html>

### 2.3 M1 Princes Motorway Interchange at Mount Ousley

Roads and Maritime Services is planning for an interchange on the M1 Princes Motorway at the base of Mount Ousley. The project would replace the existing at grade intersection of the M1 and Mount Ousley Road.

The Review of Environmental Factors and concept design was put on display in November 2017. A Submissions Report was published in April 2018 that addressed feedback from the community during the consultation period last year and has proposed a few design changes. It considered additional consultation that took place around noise management during and after construction.

Roads and Maritime commenced detailed geotechnical investigations in late September 2018 and this is expected to take up to three months to complete.

The project has achieved planning approval. Subject to funding, the next stage will be to prepare the detailed design for the project. Timing and funding for construction of the interchange upgrade is still

to be confirmed.



<http://www.rms.nsw.gov.au/projects/illawarra/mount-ousley-road/m1-interchange/index.html>

## 2.4 Nelligen Bridge replacement, Kings Highway

Roads and Maritime is planning to replace the existing Nelligen Bridge with a new bridge upstream to ensure a safe and reliable crossing on the Clyde River, and to improve road safety and traffic efficiency on the Kings Highway.

Roads and Maritime Services have completed the concept design and environmental assessment.

A detailed design contract is now complete and Contractors were invited to submit tenders in October 2018 to build the replacement bridge over the Clyde River at Nelligen. Tenders close in late November 2018.

Eurobodalla Shire Council has commenced early works for the Nelligen Bridge Replacement project. This includes clearing of vegetation, delivery of earth fill, and start of earthworks on the eastern side of the Clyde River. This early work is to prepare the ground for major work and aim to get vehicles on the new bridge quicker.

Construction of the new bridge is anticipated to start in 2019 with the project expected to open to traffic in late 2020.

<http://www.rms.nsw.gov.au/projects/south-coast/kings-highway/nelligen-bridge/index.html>

## 2.5 Charleyong Bridge replacement

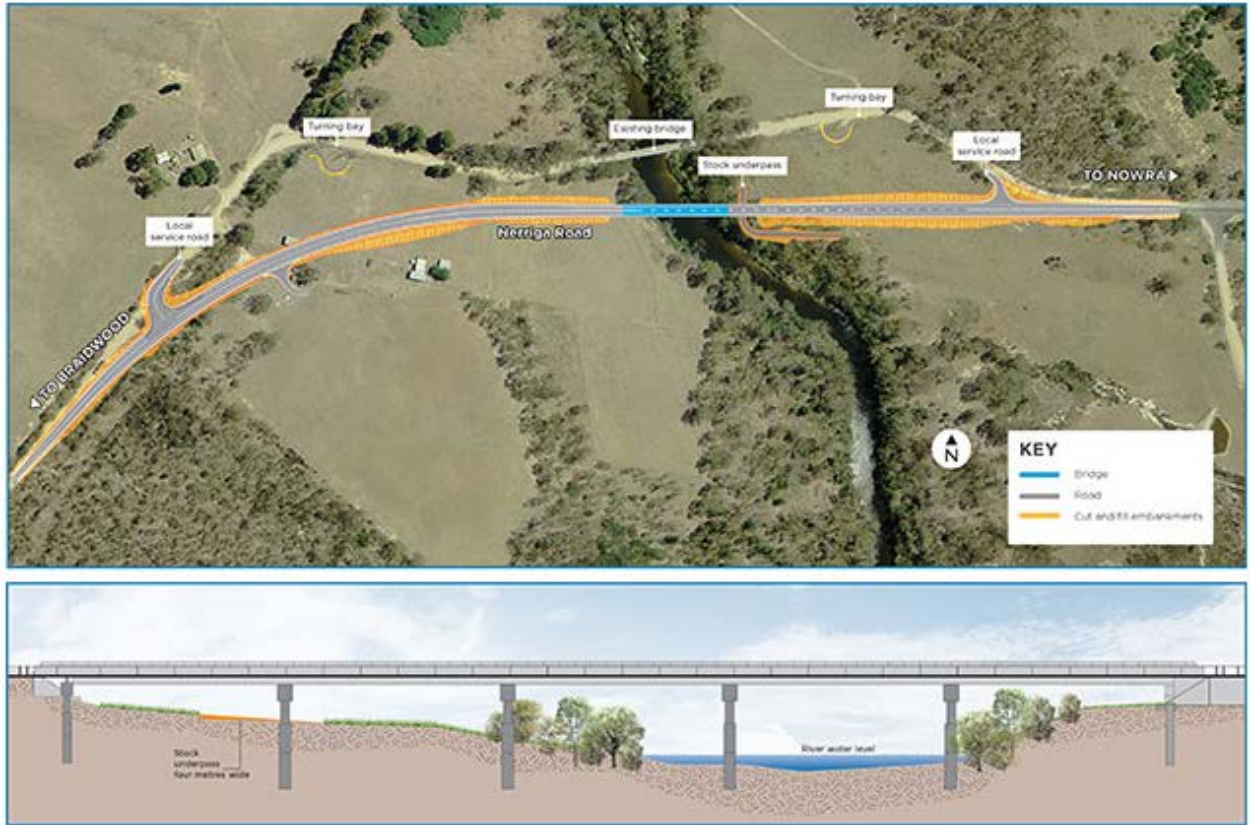
Roads and Maritime Services is planning the replacement of Charleyong Bridge over the Mongarlowe River, Marlowe. The bridge is located on Main Road 92 connecting Braidwood and Nowra via Nerriga.

The project is jointly funded, with the NSW Government allocating \$18 million and the Australian Government allocating \$5 million for the project.

The detailed design of the new bridge has been completed with a number of changes made to the design since the Review of Environmental Factors was displayed in July 2016. This includes an additional two u-turn bays and a stronger pavement for a longer design life.

Work on the road approaches to the bridge started in July and will be completed by Queanbeyan-Palerang Regional Council.

Tenders to construct the new bridge have been issued. Tenders closed on 3 September 2018. The successful tenderer is expected to be announced in late 2018.



<http://www.rms.nsw.gov.au/projects/south-coast/charleyong-bridge/index.html>

## 3 Projects in Construction

### 3.1 Berry to Bomaderry Upgrade, Princes Highway

Roads and Maritime Services is upgrading the Princes Highway between Berry and Bomaderry. The \$450 million project will improve safety, increase road capacity, improve traffic flow and deliver better and more reliable journeys on this section of the highway.

The construction contract for the highway upgrade project was awarded to Downer/ Seymour Whyte with major work started in August 2018.

Four lanes of new divided road between Mullers Lane at Berry and the Cambewarra Road roundabout at Bomaderry will be built.

Work is scheduled for completion in 2022.



<http://www.rms.nsw.gov.au/projects/south-coast/berry-to-bomaderry/index.html>

### 3.2 Princes Highway Albion Park Rail Bypass

Roads and Maritime Services is upgrading the M1 Princes Motorway between Yallah and Oak Flats to bypass Albion Park Rail. The bypass would complete the 'missing link' for a high standard road between Sydney and Bomaderry.

In July 2018, the design and construct contract for the Albion Park Rail bypass was awarded to Fulton Hogan.

Early work to reconfigure the Croom Regional Sporting Complex as part of the Albion Park Rail bypass project has commenced and this will allow land to be freed up to enable construction of the bypass. Work at the sporting complex is expected to be finished by mid 2019, weather permitting.

Construction of the bypass is on track to start in early 2019.

<http://www.rms.nsw.gov.au/projects/illawarra/albion-park-rail-bypass/index.html>

### 3.3 Batemans Bay Bridge

Roads and Maritime Services is replacing the Batemans Bay Bridge over the Clyde River to improve access to Batemans Bay and surrounding areas, allow access for larger trucks, reduce traffic delays and improve the Kings and Princes Highway intersection.

Roads and Maritime Services put on display the environmental assessment, including the Review of Environmental Factors and Environmental Impact Statement for the Batemans Bay Bridge project in November 2017. Roads and Maritime Services addressed each submission received during the display period of the environmental assessment and published a Submissions Report in May 2018.

John Holland was announced as the preferred tenderer to design and build the new Batemans Bay Bridge in May 2018.

Early works have commenced including the relocation of utilities.

Major work is planned to commence early 2019.



<http://www.rms.nsw.gov.au/projects/south-coast/batemans-bay-bridge/index.html>

### 3.4 Princes Highway Dignams Creek

Roads and Maritime Services is upgrading the Princes Highway at Dignams Creek, around 20kms south of Narooma. The \$45 million upgrade will improve road safety by widening the current highway for about 800 metres and building a new two kilometre section to current highway standards. It will also include new bridges over Dignams Creek and Dignams Creek Road.

Major construction work is progressing well with over 70% of the works complete.

The upgrade is expected to be completed by mid-2019, weather permitting.



<http://www.rms.nsw.gov.au/projects/south-coast/dignams-creek/index.html>

### 3.5 Ellerton Drive Extension, Queanbeyan

The \$86 million Ellerton Drive extension project started construction in November 2017. The Australian and NSW governments have each committed \$25 million towards the project while Queanbeyan-Palerang Regional Council has committed \$36 million.

The 4.6km road provides an alternative route around the Queanbeyan CBD to the new southern population growth areas.

Construction is progressing well with almost 25 per cent of the earthworks and 95 per cent of the ground clearing for the new road completed. Earthworks will continue in the coming months, storm water drains and wildlife crossings will also be built.

Environmentally friendly changes to the bridge design have been made. This allows the bridge structure to be launched incrementally from one side of the river, reducing the impact on the waterway.

The construction of the bridge has started, during the first few months work will involve preparation for piling and bridge staging construction.

The new road is expected to be completed in mid-2020 weather permitting.



<http://www.rms.nsw.gov.au/projects/south-coast/ellerton-drive/index.html>

### 3.6 Lansdowne Bridge

The Australian and NSW Governments are jointly funding the \$18.6 million upgrade and replacement of the Lansdowne Bridge over the Mulwaree River, Goulburn.

Final demolition of Lansdowne Bridge was completed in early June.

The contract for construction of the new bridge and road approaches has started following the award of the contract to Abergeldie Contractors. Work is expected to be completed in mid-2019 weather permitting..

Detours remain in place via Brisbane Grove Road and Forbes Street whilst the new bridge is constructed.



<http://www.rms.nsw.gov.au/projects/south-coast/lansdowne-bridge/index.html>



### 3.7 Monaro Highway and Kosciuszko Road overtaking lanes and safety improvements

The NSW Government has provided \$20 million to improve traffic efficiency and safety along Kosciuszko Road and the Monaro Highway.

After being temporarily suspended for the 2018 snow season, work restarted on Monday 8 October 2018 to finalise the additional westbound lane on Kosciuszko Road, between Barry Way and Alpine Way in Jindabyne.

Work is expected to be complete by May 2019, weather permitting.

Work has also restarted on the new southbound overtaking lane five kilometres south of Michelago.

The 1.5 kilometre westbound overtaking lane on Kosciuszko Road, near Slacks Creek at Coolringdon, has now been completed. The work was carried out by Snowy Monaro Regional Council on behalf of Roads and Maritime Services.

<http://www.rms.nsw.gov.au/projects/south-coast/monaro-highway-kosciuszko-road/index.html>

## 4 Recently completed projects

### 4.1 Foxground & Berry Bypass – Toolijooa Road to Schofields Lane, Princes Highway

The Foxground and Berry bypass has opened to traffic. It provides a four-lane highway (two lanes in each direction) with median separation for 12.5 kilometres of the Princes Highway between Toolijooa Road and just south of Andersons Lane.

The upgrade includes a bypass of the existing winding highway at Foxground and a bypass of Berry with access ramps at the north and south of the town.

<http://www.rms.nsw.gov.au/projects/south-coast/foxground-berry-bypass/index.html>



### 4.2 Princes Highway Burrill Lake Bridge

Roads and Maritime Services has completed the new Burrill Lake Bridge on the Princes Highway, just south of Ulladulla. Construction of this \$58 million project was complete in March 2018.

Roads and Maritime Services celebrated the completion of the Burrill Lake Bridge replacement project at an event on 27 March 2018.



<http://www.rms.nsw.gov.au/projects/south-coast/burrill-lake-crossing/index.html>