

# Renaë Elrington

## REGIONAL MANAGER, SOUTHERN ROADS & MARITIME SERVICES

15 May 2014

# Structural Change and Reform Roads and Maritime Services

## Relationships within the Agency

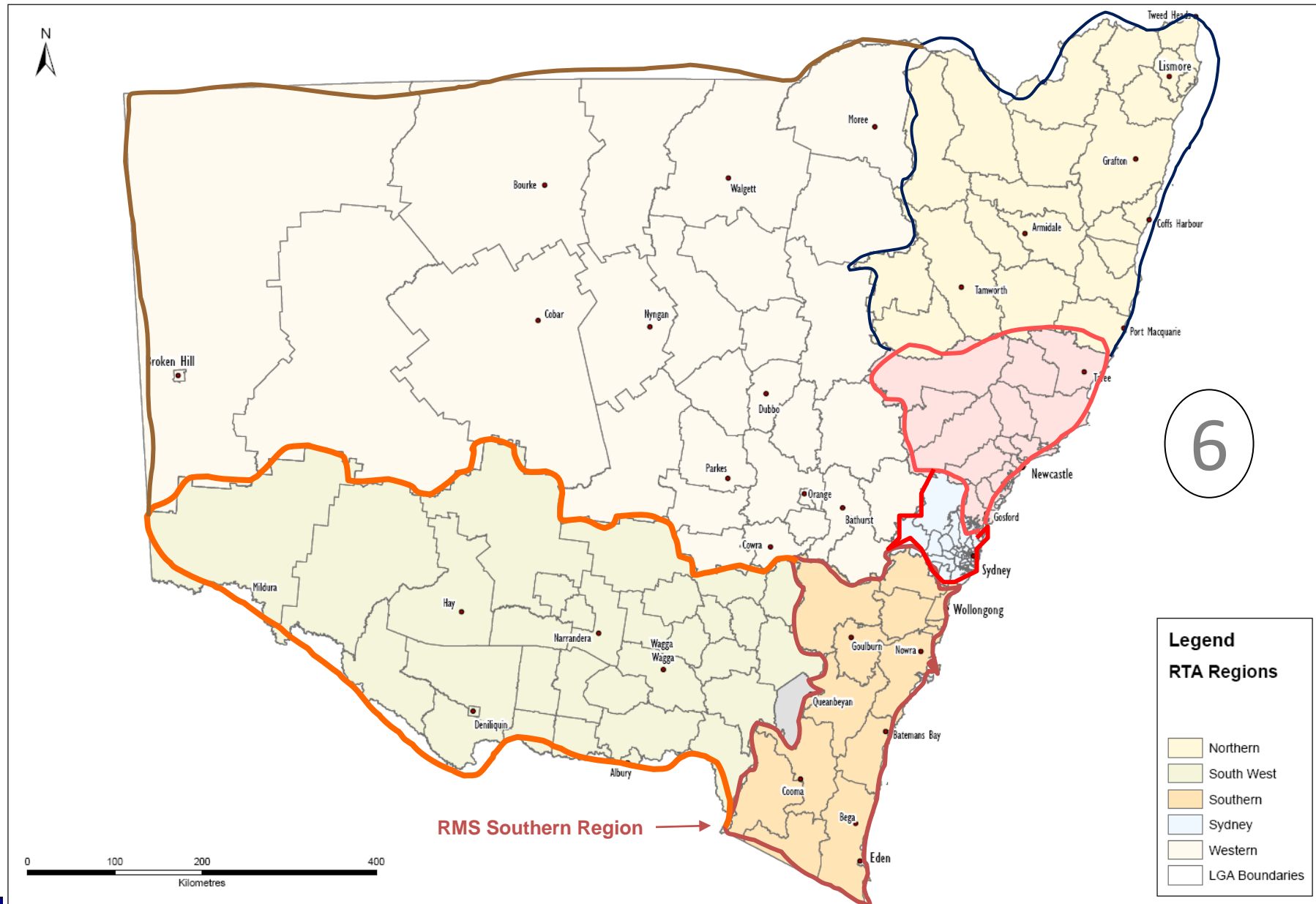
## RMS and Transport for NSW Relationship



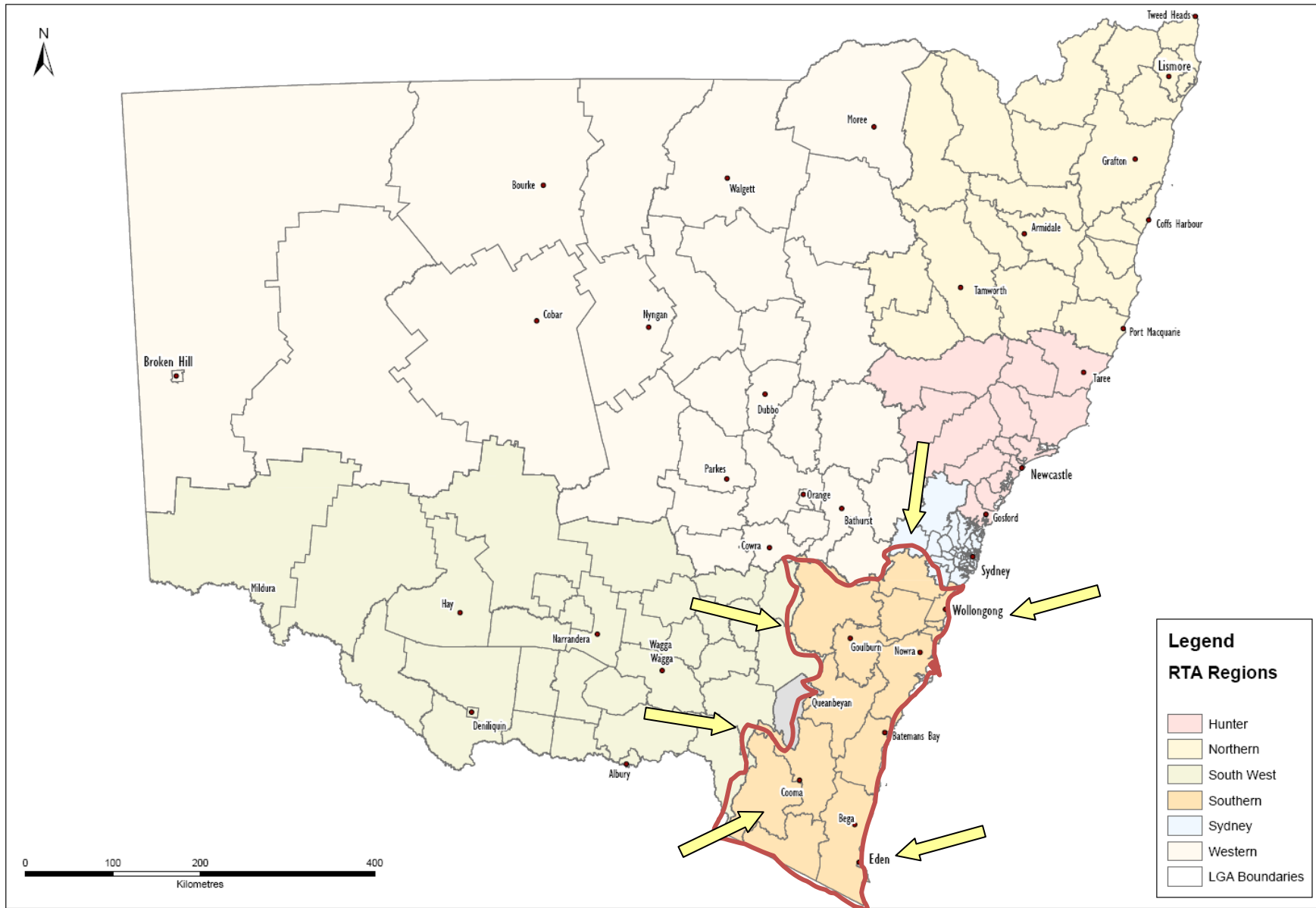
## Why Reform?

- Understanding that the world around government is changing faster than we are; e.g. a progressive doubling of the freight task, economic and population growth, significant pressure for government reform, community service expectations.
- **Prioritised investment vs. agency silo-ed investment.** Progressive collaboration between agency and stakeholder cultures.
- Aligning service framework to meet government drivers (Public Service Commissioner and others.)

# RMS RMS REGIONS



# NSW REGIONS AND INTER-RELATIONSHIPS

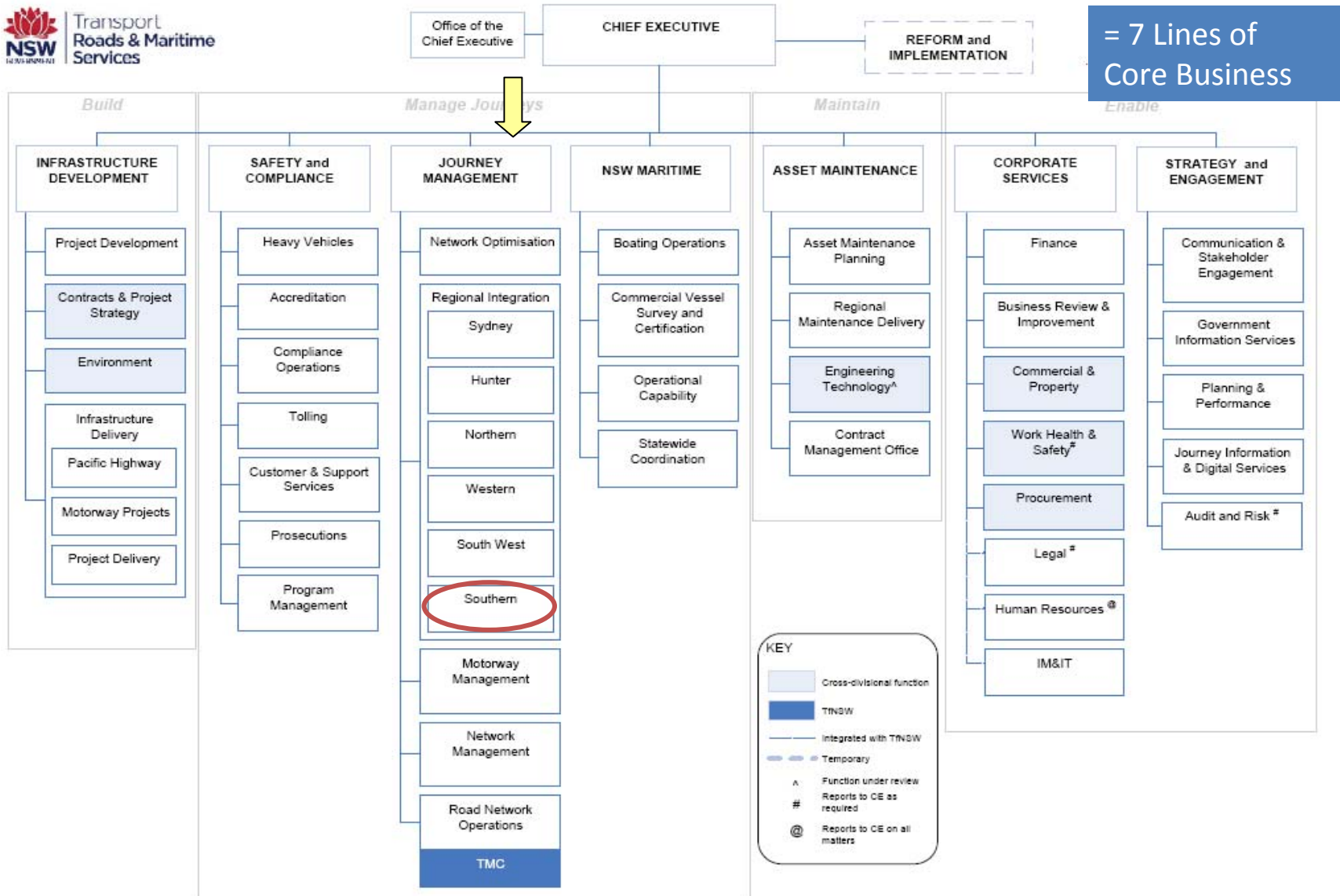


## Agency Purpose

- Oversee, build and maintain NSW road infrastructure. Manage and deliver the day-to-day compliance and safety systems for customers of roads and waterways.
- Created in November 2011 from a merger of the Roads and Traffic Authority and NSW Maritime. Major planning authority transferred to Transport for NSW.



# RMS Agency Organisational Chart

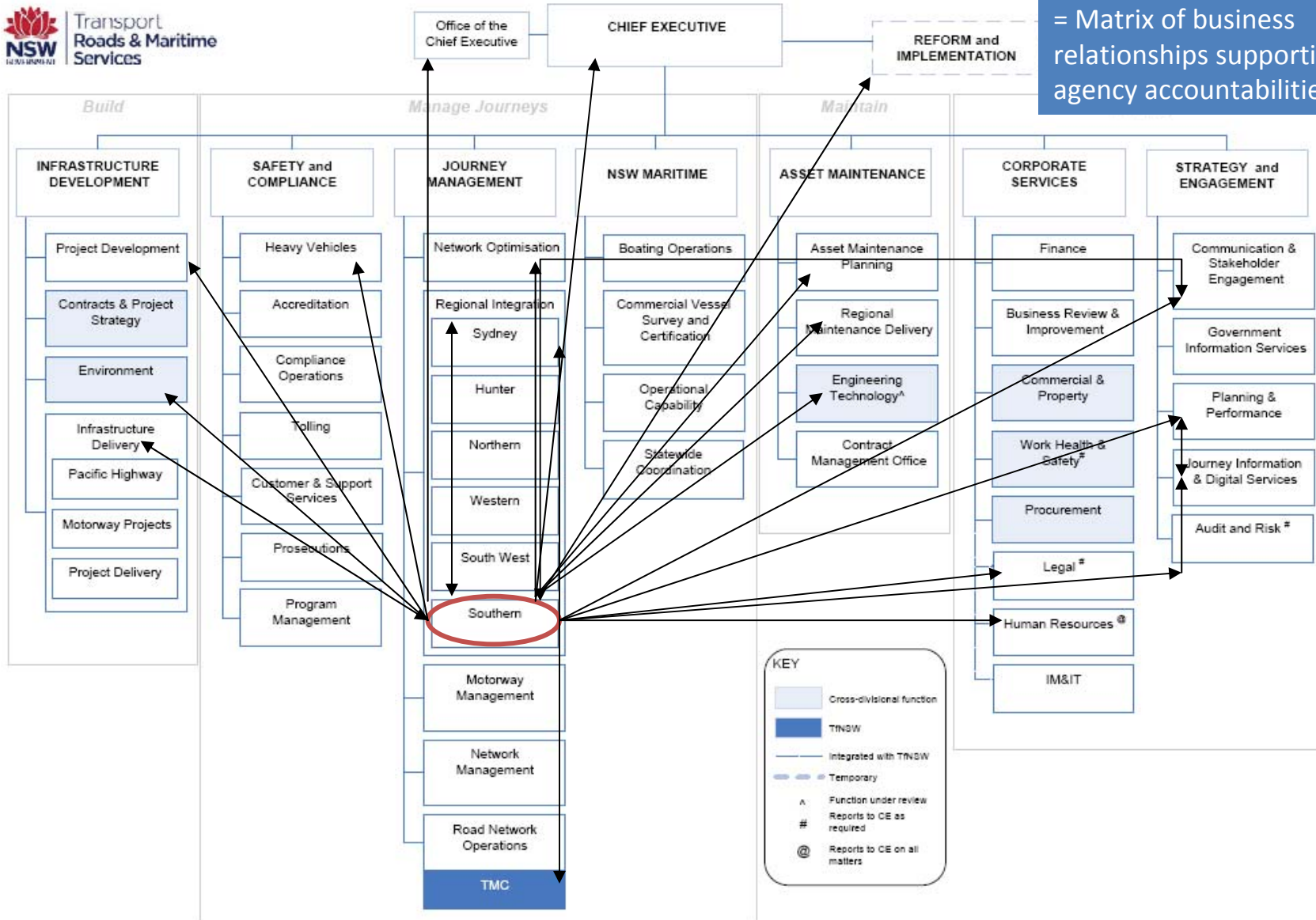


= 7 Lines of Core Business



# Internal Agency Relationships

= Matrix of business relationships supporting agency accountabilities





## 1. Infrastructure Development

- **Larger complex statewide projects**, significant high expenditure, high levels of planning and project development and delivery expertise.
- Accountability - investment value for money. **Influenced by 2021 State Action Plan and TfNSW** systemised planning and gateway processes (State and Federal processes).
- Projects funded on statewide gateway priority system e.g. RMS projects listed in SEATS and TfNSW processes.

## 2. Safety & Compliance

- Managing wide ranging regulatory policy and practice.

## 3. Journey Management

- Managing people's road network journeys, safety and road user behaviours.
- Specialist areas including **Network Management** (optimal traffic management) , **Network Optimisation** (planning for network investments with TfNSW), **Regional Integration**, **Motorways** (long life infrastructure contract management, e.g. M7).
- **Network Operations** (traffic systems, Technology development. Work closely with TMC)

## 4. NSW Maritime

- Regulatory compliance and safety education to the boating portfolio. Maritime NSW integrated into RMS.

## 5. Asset Maintenance

- Efficient development and delivery of Maintenance Programs and Projects.
- **Asset Maintenance Planning and Regional Maintenance Delivery.**
- The division includes **Contract Management Office, Engineering Technology** (e.g. Road and Bridge Design). Sydney maintenance delivery outsourced in 2014.

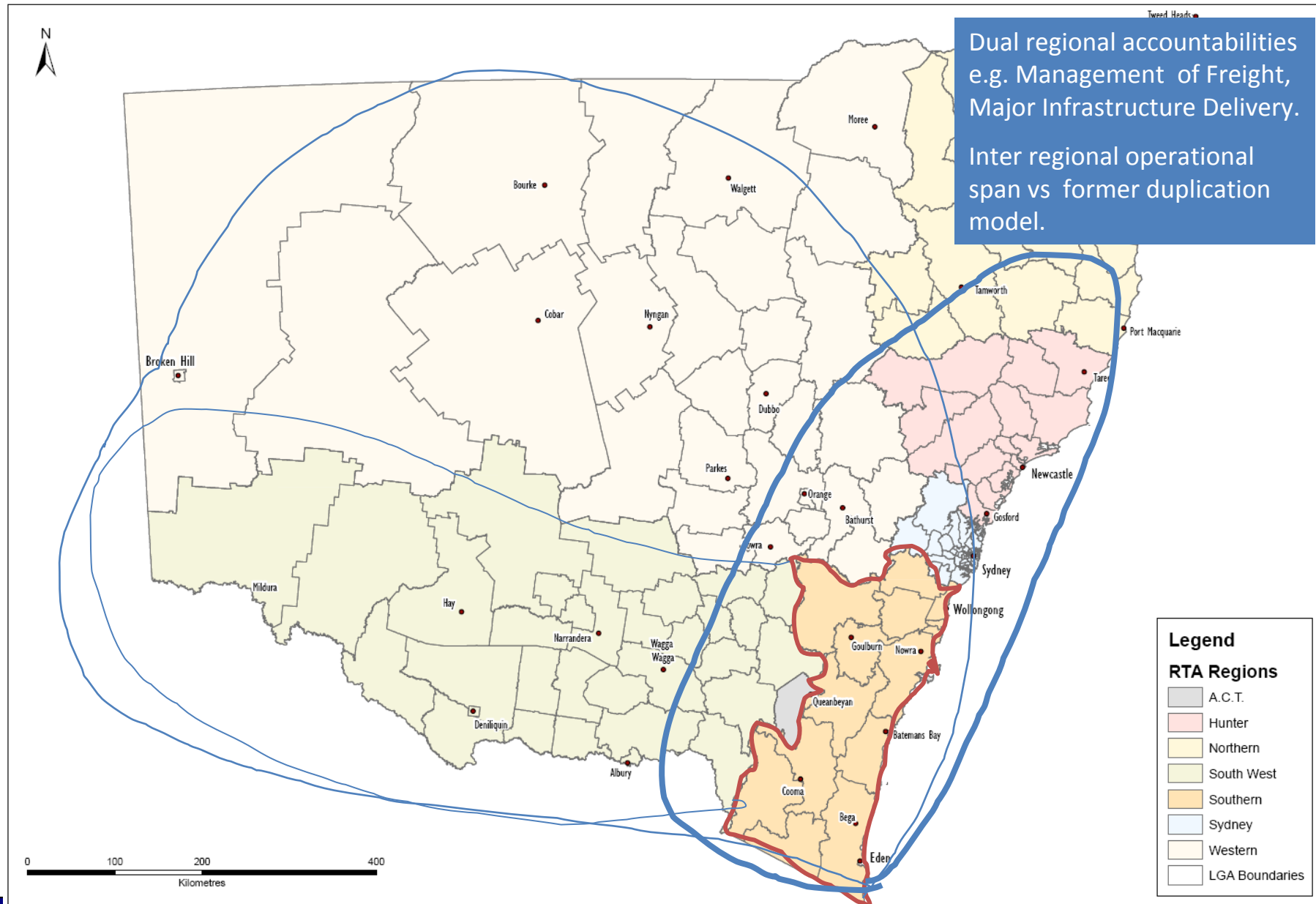
## 6. Corporate Services

- Centralised business services e.g. Procurement, WH&S and Commercial and Property.

## 7. Strategy & Engagement

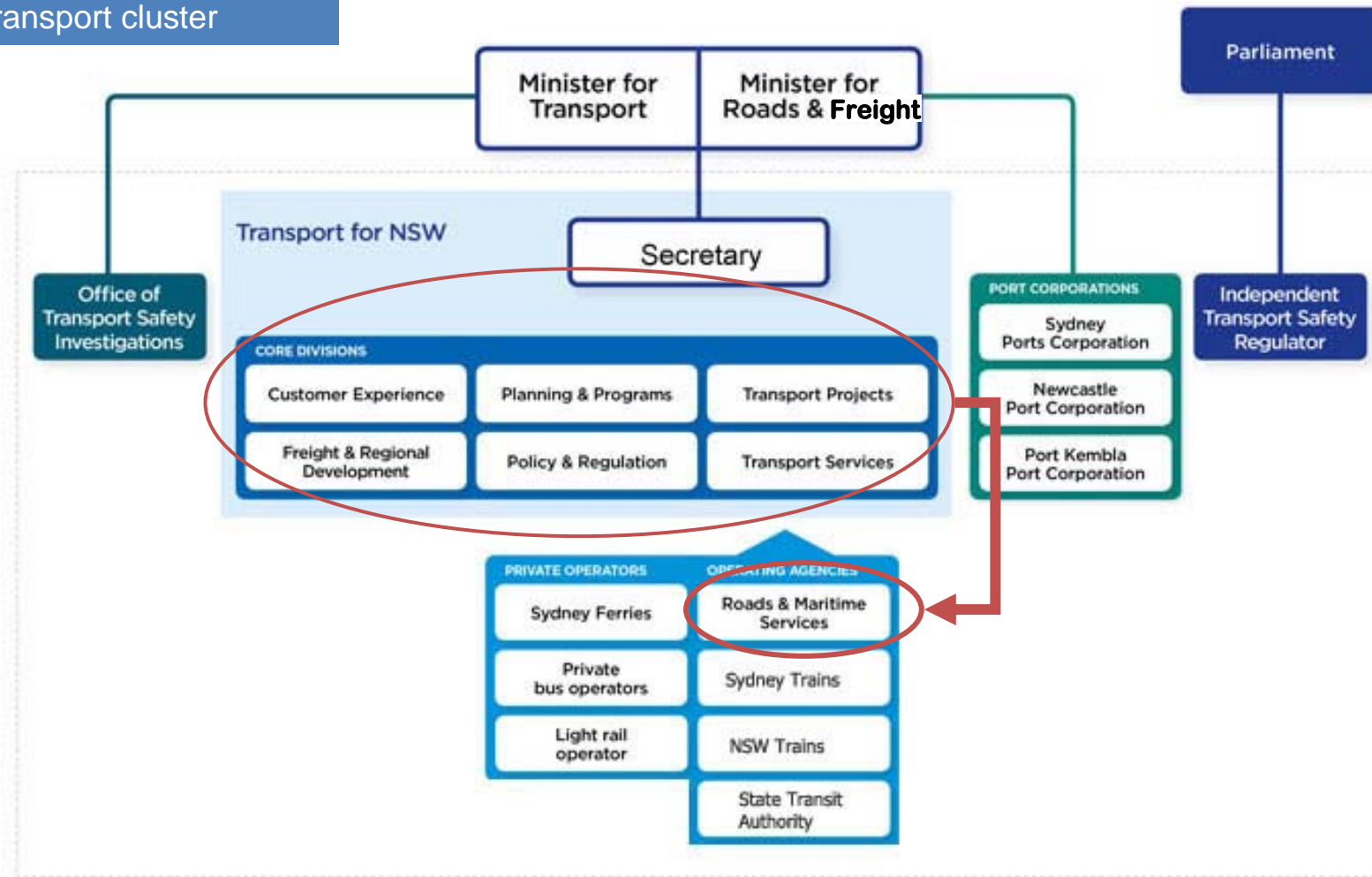
- **Government information systems,** correspondence flows, Ministerial support, strategy for agency communication, engagement, stakeholder systems and protocols.

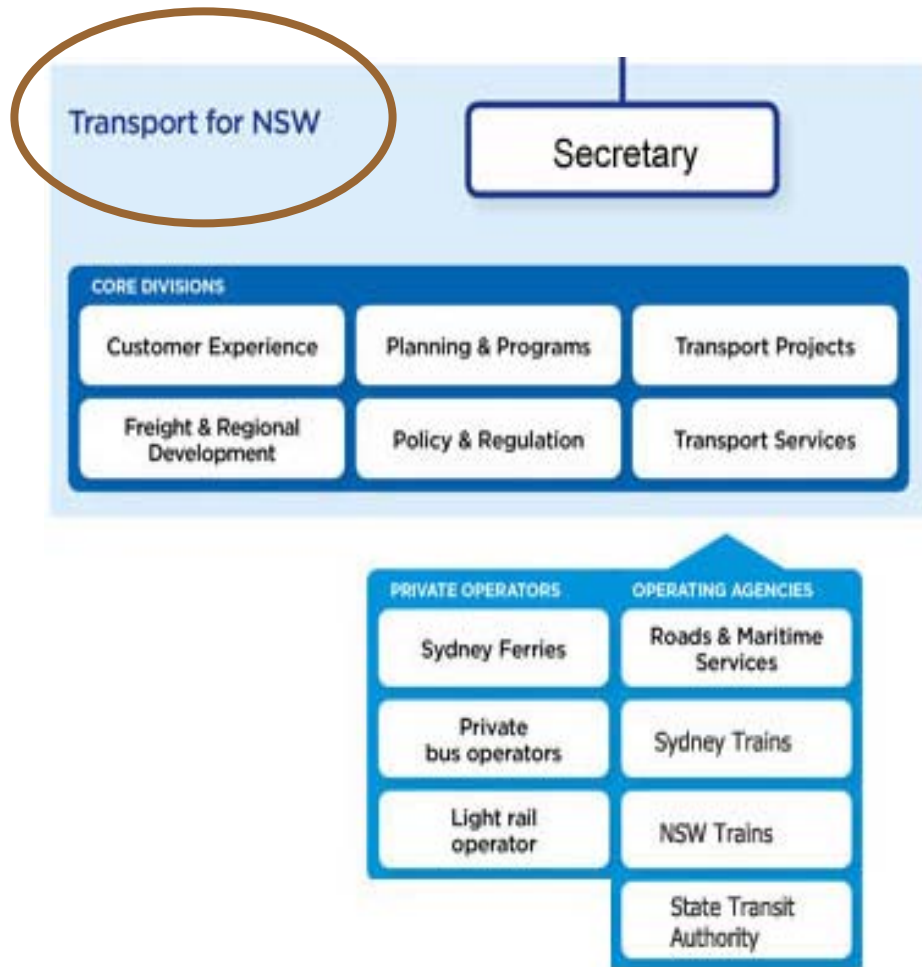
# REGIONAL CONTEXT



# AGENCY RELATIONSHIP AND TRANSPORT FOR NSW

Integrated modal focus  
& opportunity across  
transport cluster





- Focused on holistic integrated mode balance (taxis, buses, ferry's, cars, pedestrians, cyclists, trains and trucks), as reflected in “*NSW, The Long Term Transport Plan*”.
- Core aim is to deliver **consolidated planning across agencies**, provide overall investment advice to government.
- e.g. refurbished stations, ferry terminals and investment in new road infrastructure, Freight/rail and freight/road integrated investments.

- State and Federal Government, Transport for NSW.
- Local Councils and Representatives.
- and Department of Planning and Environment, Treasury, Department of Premier and Cabinet, Department of Trade and Investment, Regional Infrastructure and Services, Department of Police and Justice, Department Public Works.
- Members of Parliament, Community and Stakeholders.
- Regulatory Agencies e.g. Audit Office of NSW.
- Industry e.g. Freight, Construction, Developers, NRMA.

