

# SEATS

August 2017

<http://www.vicroads.vic.gov.au/Home>

## Princes Highway East - Traralgon to Sale Duplication

The duplication of the Princes Highway between Traralgon and Sale is a \$260 million investment from the Federal Government (\$210m) and State Government (\$50m). The project is expected to duplicate over 30km of the 43km of undivided length of the highway between Traralgon and Sale.

Princes Highway East Duplication – Traralgon to Sale  
Funding stages – November 2016



The project will be delivered in eleven sections, six sections have been completed (part of the original \$175M funding), construction has is underway on three additional sections and preconstruction is well advanced on final two sections.

Sections that have been completed:

- Two sections at Traralgon East from Traralgon-Maffra Rd to Minniedale Rd.
- Flynn to Rosedale
- Nambrook 1, to the east of Denison Rd to east of Nambrook Rd
- Wurruk to Sale
- Fulham 1 including Sale-Heyfield Rd roundabout.

The status of the additional sections is detailed below:-

- Fulham 2, west of Sale-Heyfield Rd to west of Sale-Cowwarr Rd. Contract was awarded in April 2016 for the roadworks. Works commenced in late October 2016.

- Nambrok 2, east of new section at Nambrok to east of Maffra-Rosedale Rd. Roadworks contracts was awarded in October and Works commenced in January 2017.
- Traralgon East 3, Minnedale Rd to east of Sheep Wash Creek Rd. Roadworks contract was awarded in November and works started in January 2017.

Contracts for the relocation of significant Gippsland Water assets on the Traralgon East section was completed in February 2017. All three sections above are expected to be completed by mid 2019.

**\$3.0 million** was allocated in the 2016-17 Victorian State budget to undertake the planning and preconstruction of remaining sections (Flynn and Kilmany). This funding includes preparation and submission of the business case and to undertake preconstruction activities including designs, geotechnical investigations, service relocations and land acquisition. These activities are well progressed or completed including land acquisition. Tenders have closed for the relocation of significant Gippsland Water assets on the Flynn Section. The construction of both the Flynn and Kilmany sections were not funded in the 2017-18 Federal and State budgets.

<https://www.vicroads.vic.gov.au/planning-and-projects/regional-road-projects/princes-highway-east-duplication-traralgon-to-sale>

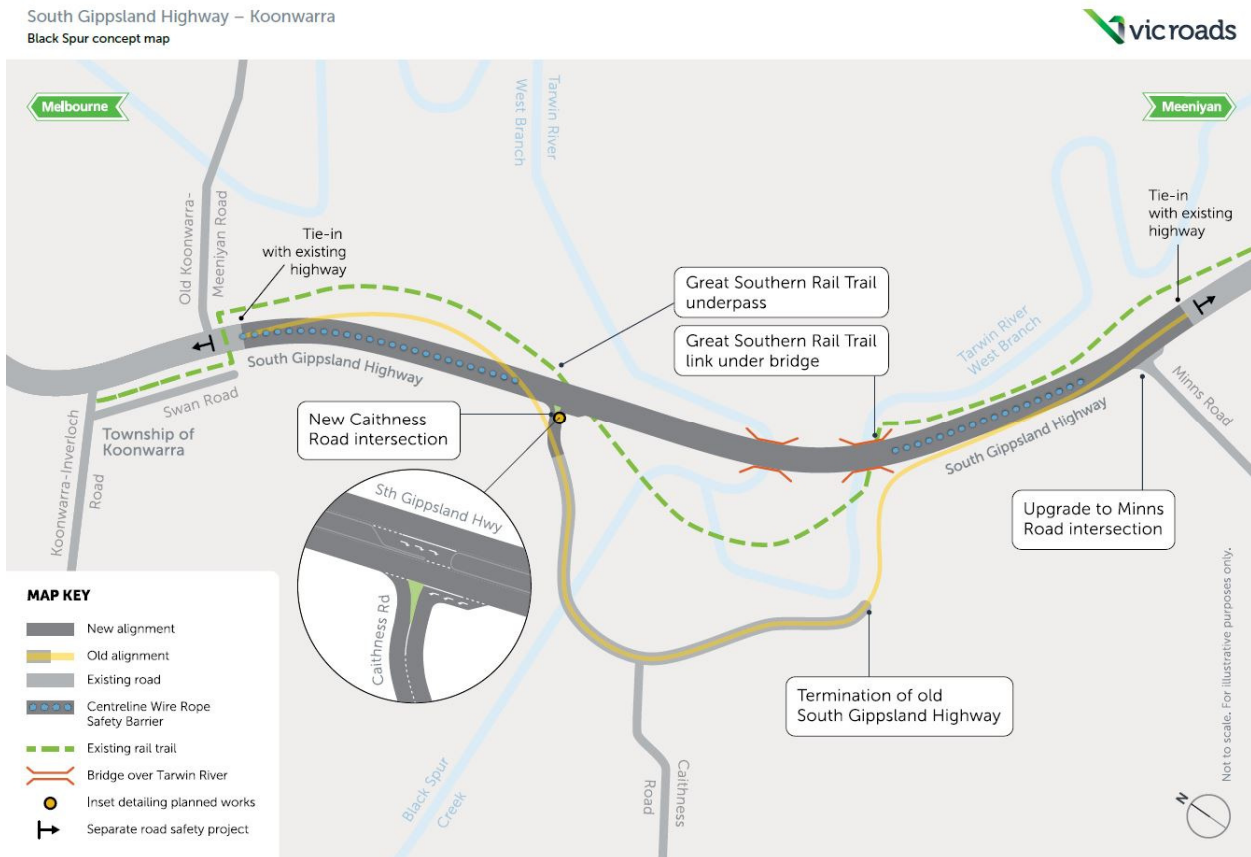
### **South Gippsland Highway – Blackspur realignment & associated safety improvements between Meeniyam and Yarram #**

The Australian and Victorian Governments have jointly funded \$50 million for the realignment of this section of the highway known locally as 'Black Spur', together with other safety improvement works between Meeniyam and Yarram.

Pre-construction activities are well advanced, including discussions with affected landowners and key stakeholders, while investigations are continuing in a number of areas including; geotechnical, hydrology, cultural heritage, flora and fauna and road and bridge design.

Expression of Interest (EOI) has been called from suitably qualified and experienced contractors to design and construct this challenging project.

Works on ground are expected to commence in early to mid 2018 with construction works anticipated to take approximately three years to complete.



<https://www.vicroads.vic.gov.au/planning-and-projects/regional-road-projects/south-gippsland-highway-black-spur-koonwarra>

## **Monash Freeway Upgrade Project**

The scope includes widening of the freeway from four to five lanes each way between the EastLink interchange and South Gippsland Freeway and widening of the freeway from two to three lanes each way between the South Gippsland Freeway and Clyde Road in Berwick. New and upgraded freeway ramp signals will also be installed as part of the upgrade. Works commenced in September 2016 and are expected to be completed in 2018.

<https://www.vicroads.vic.gov.au/planning-and-projects/melbourne-road-projects/monash-freeway-upgrade>

## **Tyers Road - Latrobe River Bridge Replacement**

As part of the Stronger Country Bridges Program, the Victorian State Government announced funding for the replacement of the Tyers Road – Latrobe River Bridge in February 2015 at a total estimated investment of **\$8.6 million**.

The new bridge will replace the 1936 composite structure which currently has a 30 Tonne load limit. Pre-construction planning activities are nearing completion and a revised road and bridge

design has been completed with a revised planning permit for removal of native vegetation expected to be lodged in early September 2017 with the works expected to be tended by late 2017.

### **Princes Highway – Overtaking lanes between Orbost and NSW border**

The 2016-17 State budget allocated **\$11.1 million** in funding for the construction of two overtaking lanes on the Princes Highway East between Orbost and the New South Wales border. These will include an eastbound overtaking lane, west of Mt Drummer and westbound overtaking lane, west of Bellbird Creek. Preconstruction planning activities is progressing with construction programmed to commence in late 2017.

### **Safe System Road Infrastructure Program (SSRIP)**

In May 2016, the State Government announced the release of the *Towards Zero 2016-2020 – Victoria’s Road Safety Strategy and Action Plan*, with an immediate goal to reduce Victoria’s road toll to fewer than 200 deaths by 2020, and reduce serious injuries by 15 per cent over the same period. The Government is investing \$1.1 billion to implement *Towards Zero*, with \$340 million dedicated to safety infrastructure improvements on the State’s highest risk high-speed rural roads.

Key safety improvements that are currently being undertaken across Gippsland are:

- **Princes Highway East, Traralgon to Longwarry (\$27M) ~ Continuous Safety Barriers:** Construction commenced in November 2016 and is expected to be completed by mid 2018.
- **Bass Highway, Lang Lang to Anderson (\$7.5M) ~ Continuous Safety Barriers:** Construction commenced in early 2017 and is expected to be completed by mid 2018.
- **Maffra-Sale Road (\$5.4M) ~ Shoulder sealing & Continuous Roadside Safety Barriers:** Construction commenced in mid 2017 and is expected to be completed by early 2018.
- **Princes Highway East, Sale to Bairnsdale (\$52M) ~ Roadside & Centreline Safety Barriers:** Pre-construction planning and community consultation is currently being undertaken. Construction is scheduled to commence in late 2017 and is expected to be completed by late 2019.
- **South Gippsland Highway, Leongatha to Meeniyan (\$13M) ~ Roadside & Centreline Safety Barriers:** Pre-construction planning and community consultation is currently being undertaken. Construction is scheduled to commence in late 2017 and is expected to be completed by late 2019.
- **Paynesville Road (\$7.5M) ~ Roadside & Centreline Safety Barriers:** Pre-construction planning and community consultation is currently being undertaken. Construction is scheduled to commence in late 2017 and is expected to be completed by late 2019.
- **Korumburra-Wonthaggi Road/Glen Alvie Road/West Creek Road/Bird Road, Lance Creek (\$3.438M) ~ Intersection Improvements:** Construction of the

roundabout and associated works commenced in early 2017 *and is expected to be completed* by late 2017.

### **Heavy Vehicle Safety & Productivity Program (HVSP) - Round 5**

The Commonwealth Government committed to the following projects under Round 5 of its Heavy Vehicle Safety & Productivity Program (HVSP) in Gippsland. The Commonwealth and Victorian Government are working together to commence construction of these projects in 2017-18. These will be funded on a 50:50 basis:

**Princes Highway East – Truck stop facilities at Moe (\$2.9 million):** Pre-construction planning activities are currently being finalised with construction scheduled to commence in late 2017.

**Princes Highway East – Roundabout improvements in Rosedale (\$2.1 million):** Pre-construction planning activities are currently being finalised with construction scheduled to commence in early 2018.

**Princes Highway East – Truck Informal Rest Area improvements & Rest Area Signage improvements (\$1.5 million):** Pre-construction planning activities are currently being finalised with construction scheduled to commence in late 2017.

**Bass Highway \ Korumburra-Wonthaggi Road – New Traffic Signals (\$3.8 million) # - includes a \$725,000 contribution from Bass Coast Shire Council:**

**The majority of these initiatives are supported by the Infrastructure Constraints – Priority Projects identified in the SEATS Region Cross Border Study (2013).**

### **Princes Highway East – Bank Street Intersection (Traralgon)**

As part of the Regional Roads Upgrade program, the Victorian Government announced **\$3 million** funding in 2017 State budget to install traffic signals at the intersection of Bank Street and the Princes Highway East in Traralgon. Pre-construction works will be commencing in late 2017 with construction scheduled to commence in late 2018.

### **Phillip Island Road – Woolamai Beach Road intersection Roundabout #**

As part of the **\$690 million** Rural and Regional Roads package, the Victorian Government announced **\$7 million** funding in the 2017 State budget to construct a dual lane roundabout as the first stage of the infrastructure improvements along the Phillip Island Road. Pre-construction works are currently underway, including land acquisition and service relocations. Construction is expected to commence mid to late 2018.

### **\$3 Billion Victorian Infrastructure Package**

In November 2016, it was confirmed that Victorian Government would match the Federal Government's \$1.5 billion commitment towards the \$3 Billion Victorian Infrastructure Package. The projects will be funded on a 50:50 basis. The Commonwealth and Victorian Government are working together to commence construction of these projects in 2017-18. Community and stakeholder consultation is progressing.

The following projects have been committed in Gippsland as part of the **\$690 million** Rural and Regional Roads component of this package:

- Princes Highway East – Upgrades between Sale and NSW Border (**\$50 million**)
- *South Gippsland Highway – Realignment east of Koonwarra & associated corridor improvements between Meeniyan and Yarram (\$50 million) #*
- Great Alpine Road – Route Improvements (**\$10 million**)
- Monaro Highway – Route Improvements (**\$10 million**)
- Hyland Highway – Route Improvements (**\$10 million**)
- *Phillip island Road – Woolamai Beach Road Roundabout (7.0 million) #*

### **Stronger Bridges, Stronger Economy Package**

As part of the \$40 million *Stronger Bridges, Stronger Economy* program announced by the Victorian Government as part of the 2017-18 State budget, the following bridge upgrade projects will be undertaken in Gippsland:

- **\$10.6 million** in funding to strengthen six bridges on the Princes Highway East corridor between Darum and Traralgon which will ensure that this key freight route is up to the task of handling larger more efficient freight vehicles (Higher Productivity Freight Vehicles) which will improve access between key markets and the Port of Melbourne. Construction works are expected to commence in late 2017.
- **\$1.4 million** to strengthen the Stony Creek bridge crossing over the Princes Highway East to avoid any further deterioration and the potential of any future load restriction. The bridge will also be strengthened to enable access Higher Productivity Freight Vehicles. Pre-construction works will commence in late 2017 with construction during 2018.
- **\$1.8 million** to strengthen the Iguana Creek bridge crossing over the Dargo Road to avoid future load limit restriction and maintain access for existing legal loads. A 50% funding contribution is currently being sought through the Australian Government's Bridges Renewal Programme. Pre-construction works will commence in late 2017 with construction during 2018.

### **Planning Our Future - Project Planning Package**

As part of the State Government's \$20 million Planning our Future package to improve Victoria's arterial road network, the following planning initiatives have been announced in Gippsland to enable VicRoads to prepare business cases outlining potential upgrades for consideration by the government.

- **\$1.4 million** to ease pressure on Princes Highway East by undertaking further planning for a bypass of Traralgon; \*\*
- **\$500,000** to explore options for road infrastructure upgrades in Warragul and Drouin to improve traffic flow, local road access and road safety to respond to peri urban growth
- **\$300,000** to further plan the realignment of a 4.5km section of the South Gippsland Highway, south of Korumburra near Coal Creek;
- **\$500,000** to examine potential upgrades along the Bass Highway corridor between Anderson and Leongatha;
- **\$450,000** to examine potential upgrades along the Sale Alternative Truck Route;
- **\$450,000** to examine potential upgrades along the Princes Highway East corridor through and around Bairnsdale to respond to urban growth;

- **\$250,000** to examine potential upgrades on the Princes Highway East between Bank Street and Breed Street intersection in Traralgon, including pedestrian connectivity between the south and north side.

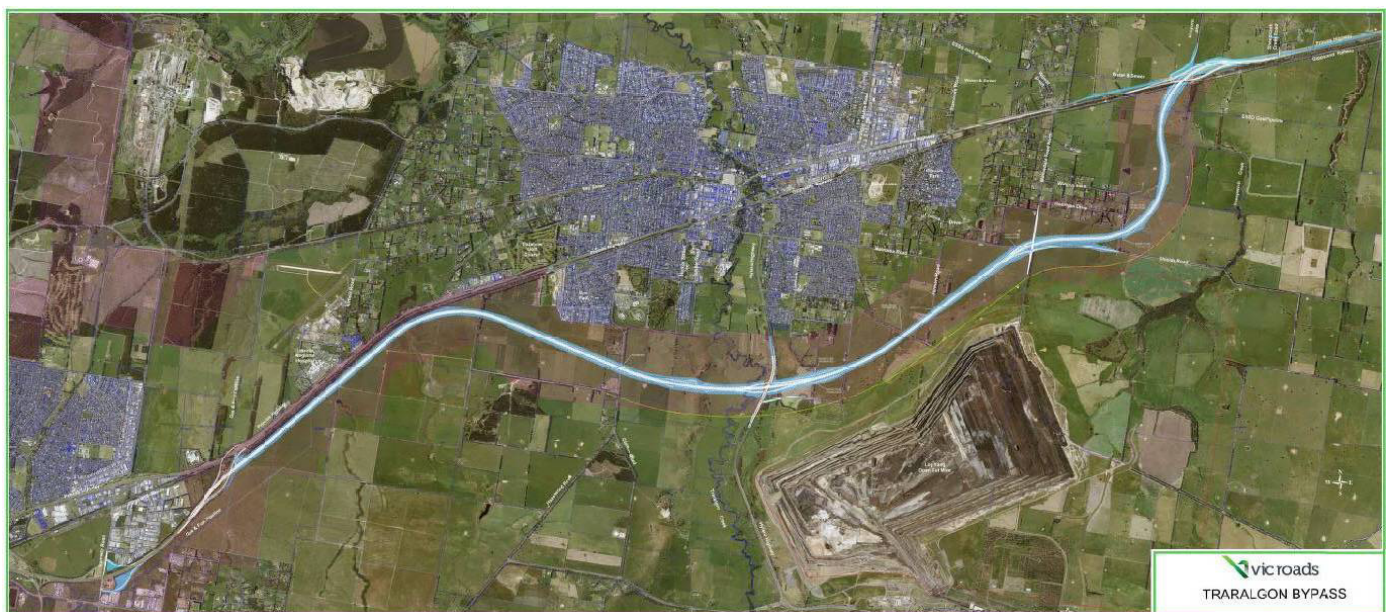
### **Phillip Island Integrated Transport Study - Project Planning**

The Phillip Island Integrated Transport Study (PIITS) was adopted by Bass Coast Shire Council in May 2014. The Study provides a community vision for the transport network on Phillip Island and surrounds.

VicRoads is currently working with the Bass Coast Shire Council and the PIITS Community Reference Group to assist with addressing initiatives outlined in the PIITS. A business case to explore funding opportunities for the implementation of dual lane roundabouts at the Back Beach Road, together with the Boys Home Road and Forest Avenue in the Newhaven area will be re-submitted for consideration in the 2018-19 Victorian State budget.

In October 2016, \$3.2 million was announced by the Victorian Government to undertake further infrastructure corridor planning for Phillip Island. VicRoads has commenced engaging with stakeholders and the community to help inform the future planning.

### **Princes Highway East - Traralgon Bypass \*\***



The by-pass route is 22km in length and is located south of Traralgon and currently includes two interchanges to provide access into the City of Traralgon.

This proposal will provide reliable travel times for through and local traffic while improving congestion, safety and amenity for the residents of Traralgon.